

# 2022 Impeller Pump Price List



Keizerswoert 30 - 3881 LE - PUTTEN - NL  
Tel.: +31(0)341-353712 - Fax: +31(0)341-360046  
[www.dintra.com](http://www.dintra.com) - [info@dintra.com](mailto:info@dintra.com)

# JMP impeller pumps

Engine Brand	Engine model	Genuine pump part no.	JMP pump no.	2022 Price
Caterpillar	C1.2, C2.2	4255421	JPR - CT0150	€ 391
Caterpillar	3054, 3056	4255411	JPR - CT3054	€ 603
Caterpillar	C4.4	4255412	JPR - CT0440	€ 619
Caterpillar	3116, 3126, C7, C9	4P-7168, 7E-3268, 170-6116, P1710	JPR - S7632	€ 583
Caterpillar	3304, 3304B, 3306, 3306B, D330C, D333C	5N9357, Jabsco 17810-1000	JPR - CT3306	€ 810



**JPR-CT0150**

**JPR-CT3054**

**JPR-CT0440**

**JPR-S7632**

**JPR-CT3306**

Caterpillar	3176, 3406, 3406B, 3406C	112-6177, 1W8584, 3N4851, 3N4852, Jabsco 17970-0100	JPR - CT3406	€ 1,369
Caterpillar	D336, D343, D353C, D353D, D353E	3N1888, 4L5788, Jabsco 17360-0001	JPR - CT3530	€ 1,609
Caterpillar	C12	3596661, G2904X	JPR - CT1200R	€ 1,502
Caterpillar	C18	1318272, 1968895, 3754703, G2902X	JPR - CT1800R	€ 1,932
Caterpillar	C32	3228594, G3001X	JPR - CT3200R	€ 2,337



**JPR-CT3406**

**JPR-CT3530**

**JPR-CT1200R**

**JPR-CT1800R**

**JPR-CT3200R**

Caterpillar	3408, 3408B, 3408C	3N7714, 3N8214	JPR - CT3408	Parts available
Caterpillar	3408, 3408B, 3408C, 3412, 3412C, 3412D	3N8561, 7C3613, 7C8382	JPR - CT3412	€ 3,579
Caterpillar	3408, 3408B, 3412, 3412C, 3412D, 3412E, 3508, 3508B, 3508C, 3512, 3512B, 3516B	5N7491, 7C3614	JPR - CT3508	€ 3,937
Craftsman Marine	3866609, CM2.16, CM3.27, CM 4.42	AA.200.90020, AA.300.90030, AA.400.90040, Jabsco 29460-10-1081, Johnson 10-24734-01	JPR - CM08IH (1,2,3)	€ 150
Craftsman Marine	CM4.65, CM4.80	AA.480.90020	JPR - CM10LH	€ 188



**Parts for JPR-CT3408**

**JPR-CT3412**

**JPR-CT3508**

**JPR-CM08IH**

**JPR-CM10LH**

Crusader	270,350,454-XL, 502-XLi throttle body, PCM 4.2	40050, RA057031, P1014, P1015, P1015-1	JPR - HSP7314	€ 463
Cummins	4B3.9M, 4B3.9-D(M), 4BT3.9M, 4BT3.9-D9(M), 4BTA3.9M, 6B5.9M, 6B5.9-D(M), 6BT5.9M, 6BT5.9-D(M)	3907458, 3912021, M71	JPR - C1025	€ 397
Cummins	6B series	3919899, P1716	JPR - S7616	€ 680
Cummins	6C, QSB 5.9, QSB 6.9	3922589, 4948142, 5268375, P2701X, P1708X	JPR - S7608	€ 567
Cummins	6BTA5.9M2, 6BTA5.9M(JWAC), 6BTA5.9M3, 6CT8.3-D(M), 6CTA8.3M2(SWAC), 6CTA8.3-D(M), 6CTA8.3-M1(JWAC)	3866493, 3897691, 3964765, P1730	JPR - S7630	€ 541



**JPR-HSP7314**

**JPR-C1025**

**JPR-S7616**

**JPR-S7608**

**JPR-S7630**

Cummins	6C series	3912139, P1722	JPR - S7622	€ 680
Cummins	6CTA 8.3M (JWAC), 6CTA8.3M2	3897194, 3964767, P1727	JPR - S7627	€ 583
Cummins	N855M, NT855M, NT855-D(M), NTA855M	3010336, 3278137	JPR - C1040	€ 644
Cummins	QSB 7.0	2886308, G2607X	JPR - C0700	€ 863
Cummins	QSC 8.3, QSL 9.0	3967246, G2603X, G2610X	JPR - C0830	€ 863



**JPR-S7622**

**JPR-S7627**

**JPR-C1040**

**JPR-C0700**

**JPR-C0830**

# JMP impeller pumps

Engine Brand	Engine model	Genuine pump part no.	JMP pump no.	2022 Price
Cummins	QSM11	3349392, 5260393, 4929178, G2903X	JPR - C1100	€ 1,083
Cummins	KT19M, KTA19M, KTA19M3/M6, KTA19-D(M), KTA19-D(M1), QSK19	3866609, Jabsco 18770-0003	JPR - C1905	€ 2,388
Cummins	KT19M, KTA19M, KTA19M3/M6, KTA19-D(M), KTA19-D(M1), QSK19	3049158, 3074540, Jabsco 44955-052	JPR - C1900 (w/o gear)	€ 3,531
Cummins	KT19M, KTA19M, KTA19M3/M6, KTA19-D(M), KTA19-D(M1), QSK19	3049158, 3074540	JPR - C1900G (w/gear)	€ 3,674
Cummins	KT38M, KTA38M, KTA50M	3049157 (old), 3085649, 3897669	JPR - C3800 (w/o gear)	€ 3,483
Cummins	KT38M, KTA38M, KTA50M	3049157 (old), 3085649, 3897669	JPR - C3800G (w/gear)	€ 3,674



**JPR-C1100**

**JPR-C1905**

**JPR-C1900**

**JPR-C3800**

Cummins	KT38M, KTA38M, KTA50M	3393018, 4314820, Jabsco 15780-0000	JPR - C3800J	Introduction 2022
Cummins	Service kit for KT38M, KTA38M, KTA50M	Replaces Cummins Kit 4334438, Jabsco 99202-1000 (Services Pump 4314820, 3393018, 4314522, Jabsco 15780-0000)	JMP kit JSK0117	€ 1,868



**JPR-C3800J**



**JSK0117**

**Bronze impellers, impeller kits, and repair kits are available for most other Cummins and Caterpillar bronze impeller pumps**

Daedong	DD4BB		JPR - 25UP	€ 217
Daedong			JPR - FU40	€ 442
Daedong	DD6AC		JPR - FU50	€ 633



**JPR-25UF**

**JPR-FU40**

**JPR-FU50**

**JPR-G6000F**

Detroit Diesel	253, 353, 453, 471	5145576 (17030), 5145577 (7260), 5145578 (17050), Jabsco 17050-0001	JPR - G6000F	€ 477
Detroit Diesel	271	5197221, Jabsco 5840-0000	JPR - G6010F	€ 559
Detroit Diesel	6V53, 6V71, 8V53	23501083, 23507971, 5107480, 5115396, 5186250, Jabsco 2570	JPR - G6100	€ 609
Detroit Diesel	6V71TI, 8V71, 12V71	23501769, 23507972, 5106016, 5122599, 8924265, Jabsco 6980-3100	JPR - G6200	€ 641
Detroit Diesel	8V92TA, 16V92TA	23507475/6/7, 23507973, 8923363, Jabsco 18760	JPR - G6300	€ 1,580



**JPR-G6010F**

**JPR-G6100**

**JPR-G6200**

**JPR-G6300**

**High Quality JMP impeller pumps, impellers, and spare parts**

# JMP impeller pumps

Engine Brand	Engine model	Genuine pump part no.	JMP pump no.	2022 Price
<b>Detroit Diesel</b>	12V71TI, 12V92TA, 16V-149TA	8927296, 23525078, Jabsco 18780/18789	JPR - G6400	€ 2,842
Detroit Diesel	Series 60	23522735, 23535200, Jabsco 17540-0001/0201	JPR - G6500	€ 2,161
<b>DongA</b>	6125		JPR - JD50LH	P.O.R.
DongA	6125		JPR - JD50KF	P.O.R.
DongA	6135		JPR - JD60IF	€ 1,083



**JPR-G6400**

**JPR-G6500**

**JPR-JD50LH**

**JPR-JD60IF**

<b>Doosan</b>	L034, L034TIH, L034TIM, DB33	65.06800-7004	JPR - D2500	P.O.R.
Doosan	4V158TI, 4V222TI	65.06800-7008	JPR - D2505	P.O.R.
Doosan	MD084, DB33, AD034, DB58TI, L066TI	60.06800-7058	JPR - D3200	P.O.R.
Doosan	MD176, D2156HM, D2156MT, MD186T, D2366T	60.06800-7059	JPR - D4000	P.O.R.
Doosan	MD136, MK150, MK190, MK230, L136	65.06800-7060C	JPR - D4005	P.O.R.
Doosan	L136T, L136TI, L086TI	65.06800-7005C	JPR - D4010	P.O.R.
Doosan	MK260, MK300 (old 196T)	60.06800-7062	JPR - D5000	P.O.R.



**JPR-D2500**

**JPR-D2505**

**JPR-D3200 / JPR-D4000**

**JPR-D4010**

**JPR-D4005 / JPR-D5000**

Doosan	L126TIH, L196TIM, MD196T, MD196TI	65.06800-7006B	JPR - D5005	P.O.R.
Doosan	4L126	400924-00007 / 600902-00063	JPR - D5010	P.O.R.
Doosan	V158TIH, V158TIM, V158TIL, V180TI, V222TIH, V222TIM, V222TIL	65.06800-7063	JPR - D6500	P.O.R.
Doosan	4V158TI, 4V158TIM, 4V222TIH, 4V222TIM	65.06800-7007	JPR - D6505	P.O.R.
Doosan	V158TI, V180TI, V222TI	400924-00008	JPR - D6510	P.O.R.
Doosan	4V158TI, 4V222TI	400924-00009	JPR - D6515	P.O.R.
Doosan	4V158TIL, 4V222TIL	400924-00001 / 65.06800-7007A	JPR - D6505A	P.O.R.



**JPR-D5005**

**JPR-D5010**

**JPR-D6500**

**JPR-D6505**

**JPR-D6510**



**JPR-6515**

**JPR-10IP**

**JPR-KU08IH**

**JPR-HME25**

**JPR-HME32**

<b>Farymann</b>	FK3, Nanni 2.60 HE/ 3.90 HE/ P30	F4B-9	JPR - 08IP	€ 162
Farymann	A30M, L30M, RM30	F35B-8	JPR - 10IP	€ 170
<b>Fisher Panda</b>	Kubota based	Gen.sets Model 5000 LPE, 6000 ND, 8000 NE, 9000 ND Johnson ref. 10-35127-3 / F4B-9	JPR - KU08IH	€ 180
<b>Hyundai</b>	M4D series	M4D56, M4D31, M4D31T, M4D34TI	JPR - HME25	P.O.R.
Hyundai	D6AC-AZ		JPR - DT50UF	€ 455
Hyundai	M6D16 series	6D16, 6D16T, 6D16TI	JPR - HME32	P.O.R.
Hyundai	H6D2TA, D6AC		JPR - FU40	€ 442
Hyundai	M6D30 series	6D22T0, 6D22TI, 6D30TI2	JPR - HME40A	P.O.R.
Hyundai	H6D7TA		JPR - FU50	€ 633
Hyundai	M6D33, M6D35, 6D36TI2, 6D35TI2, 6D35TI3	6D35TI2, 6D35TI3, 6D36TI2	JPR - HME50	P.O.R.



**JPR-FU40**

**JPR-HME40A**

**JPR-HME50**

# JMP impeller pumps

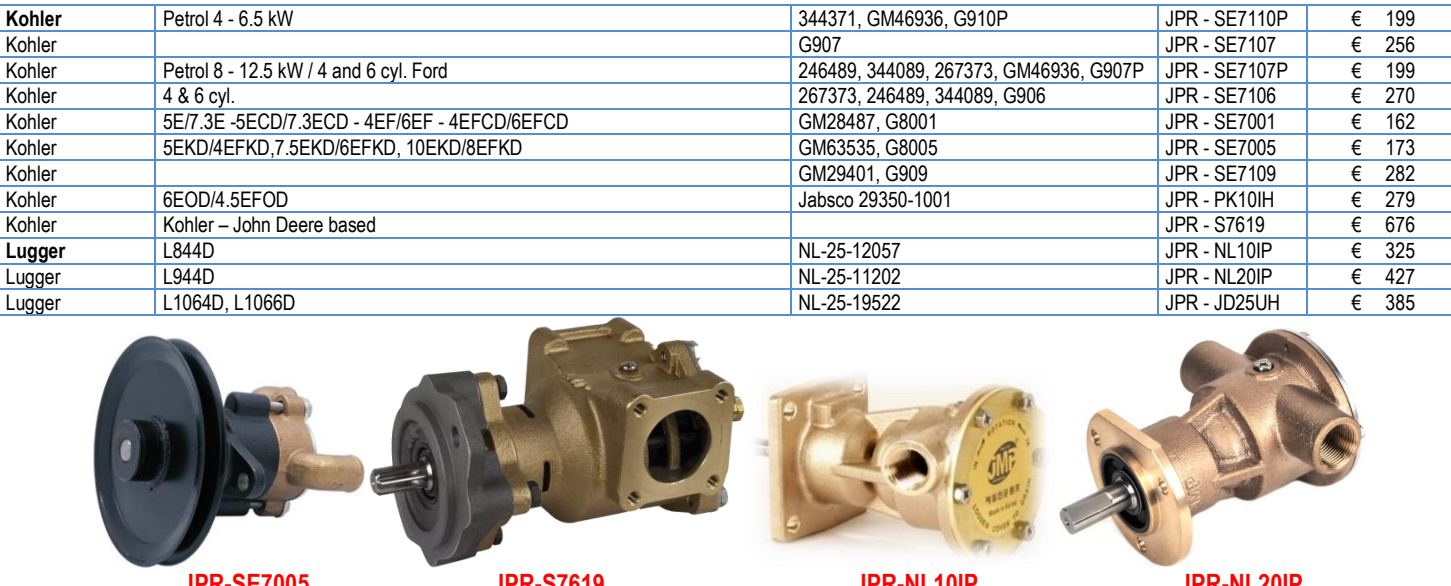
Engine Brand	Engine model	Genuine pump part no.	JMP pump no.	2022 Price
Hyundai Seasall	Seasall U125	00400-1U100	JPR - HDS125	P.O.R.
Hyundai Seasall	Seasall D170, D150	00102-7D101	JPR - HDS170	P.O.R.
Hyundai Seasall	Seasall R-series		JPR - HDS200	P.O.R.
Hyundai Seasall	Seasall S220, S250, S270	00102-5S101	JPR - HDS250	P.O.R.
Hyundai Seasall	Seasall H380	00400-4H160	JPR - HDS400	P.O.R.
Hyundai Seasall	Seasall L500	00400-6L160	JPR - HDS500	P.O.R.



Indmar	Crank driven pump	Johnson 10-24930-01 / F6B-9, P105	JPR - CP25UH	€ 179
John Deere	4039DFM01, 4045TFM01, 6068DFM01, 6068TFM01, 4045TFM75, 4045DFM70, 6068TFM75/TFM76, 6068SFM50, 6068TFM50, 4045DFM50, 4045TFM50	RE47016, RE503068, RE525263, RE535944, Johnson 10-24753-01	JPR - JD25UH	€ 385
John Deere	6067AFM, 6067AFM30, 6125AFM01, 6081AFM01, 6081AFM75, 6081AFH75, 6081HFH70, 6068SFM50, 6068TFM50	RE40399, RE45458, RE45459, RE515657, RE517226, P1719	JPR - S7619	€ 676
John Deere	6068SFM50	RE515657, P1733	JPR - S7633	€ 692
John Deere	6125A, 6125H	RE45458	JPR - JD50LF	€ 765
John Deere	6125	48101087	JPR - JD50LF2	€ 800
John Deere	6125AFM75, 6125SFM75, 6135SFM75, 6135AFM75	RE530689, RE536016, RE524510, RE530872, G1816X	JPR - JD60IF	€ 1,083
John Deere	6125AFM75, 6125SFM75, 6135SFM75, 6135AFM75	DZ108620, G2610X	JPR - JD60IF2	€ 1,083
John Deere	6135	RE530689, RE536016	JPR - JD60LF	€ 1,137
John Deere	6135	RE530689, RE536016	JPR - JD60LF2	€ 1,137



Kohler	Petrol 4 - 6.5 kW	344371, GM46936, G910P	JPR - SE7110P	€ 199
Kohler	Petrol 8 - 12.5 kW / 4 and 6 cyl. Ford	G907	JPR - SE7107	€ 256
Kohler	4 & 6 cyl.	246489, 344089, 267373, GM46936, G907P	JPR - SE7107P	€ 199
Kohler	5E/7.3E -5ECD/7.3ECD - 4EF/6EF - 4EFC/6EFC	267373, 246489, 344089, G906	JPR - SE7106	€ 270
Kohler	5EKD/4EFKD, 7.5EKD/6EFKD, 10EKD/8EFKD	GM28487, G8001	JPR - SE7001	€ 162
Kohler	6EOD/4.5EFOD	GM63535, G8005	JPR - SE7005	€ 173
Kohler	Kohler - John Deere based	GM29401, G909	JPR - SE7109	€ 282
Lugger	L844D	Jabsco 29350-1001	JPR - PK10IH	€ 279
Lugger	L944D		JPR - S7619	€ 676
Lugger	L1064D, L1066D	NL-25-12057	JPR - NL10IP	€ 325
		NL-25-11202	JPR - NL20IP	€ 427
		NL-25-19522	JPR - JD25UH	€ 385



**JMP** impeller pumps offer high quality materials, long lasting impellers and are assembled with top quality mechanical seals and bearings.

# JMP impeller pumps

Engine Brand	Engine model	Genuine pump part no.	JMP pump no.	2022 Price	
MAN	D2676	65.00600-0016, Jabsco 22040-0701S	JPR - MN50	€ 928	
MAN	D2530M, D2540L, ML & MT	51.06500-7026, Jabsco 22040-0701	JPR - MN50	€ 928	
Marine Powr	Crank driven pump	Johnson 10-24930-01 / F6B-9, P105	JPR - CP25UH	€ 179	
 					
<b>JPR-MN50</b>		<b>JPR-CP25UH</b>			
Mase		Johnson ref. 10-24569-01	JPR - 10IP	€ 170	
Mase		Johnson ref. 10-24570-01	JPR - 15IP	€ 173	
Mase		Johnson ref. 10-24571-01	JPR - 20IP	€ 223	
Mase	Kubota based 2.60 HE/ 3.90 HE/ P30	Jabsco 29470-2031	JPR - KU25IP	Available in 2022	
					
<b>JPR-10IP</b>		<b>JPR-15IP</b>		<b>JPR-20IP</b>	
<b>JPR-KU25IP</b>		<b>JPR-HSP7305</b>			
Mer cruiser	CMD QSD 4.2 EI 270, CMD QSD 4.2 EI 320, CMD QSD 4.2 EI 350, CMD QSD 4.2 ES 270, CMD QSD 4.2 ES 320, CMD QSD 4.2 ES 350	897345016, P1505	JPR - HSP7305	€ 475	
Mer cruiser	CMD QSD 2.0 EI 150, CMD QSD 2.0 ES 130/170, CMD 2.8 EI/ES 170/200/210/220/230, CMD QSD 2.8 EI/ES 170/210/220/230, CMD QSD 2.0 EI/ES 115/130/150, 2.0L EI 130/150/170/115, 2.0L ES 130/150/170	854179001, 879312023, P1016	JPR - HSP7316	€ 356	
					
<b>JPR-HSP7316</b>		<b>JPR-MD65LF</b>		<b>JPR-ME5000</b>	
<b>JPR-ME5000 pumps also available with pedestal and pulley for keel cooled engines</b>					
Mitsubishi	S4S, S6S (adaptor kit is sold separately)		JPR - MG20IP	P.O.R.	
Mitsubishi	S6A, S6B, S6R, S6R2	37553-28100, 37553-18102, 37555-101N0, 37553-10100	JPR - MD65LF2	€ 1,308	
Mitsubishi	S6A, S6B, S6R, S6R2 pump only for keel cooling	Without gear	JPR - ME5000	from € 1,082	
Mitsubishi	S6A3	GEA0010 (42763-00200)	JPR - ME5000A	€ 1,209	
Mitsubishi	S6B5	GEA0026 (34A53-01200)	JPR - ME5000B	€ 1,209	
Mitsubishi	S12R		JPR - ME5000P	€ 1,143	
Mitsubishi	S6R, S6R2	GEA0019 (Mitsubishi F2330-22005)	JPR - ME5000R	€ 1,209	
					
<b>JPR-G6500</b>		<b>JPR-08IP (shown with hose conn.)</b>		<b>JPR-JD50LF2</b>	
MTU	SERIES 60	23525078, 23522735, Jabsco 17540-0001/0201	JPR - G6500	€ 2,161	
Nanni	260HE, 390HE, P30, 390H		JPR - 08IP	€ 162	
Nanni	John Deere based	48101087	JPR - JD50LF2	€ 800	
Northern Lights	M643, M643K, M643M, NL643, M673, M673D, M673L, M673L2, M673L3, M673LD2, M673LD3, NL673, NL673L, NL673L2, NL673L3	NL-25-12007, Jabsco 30415-7001	JPR - NL08IH	€ 263	
Northern Lights	M16C, M20CL, M20CR, M20CR2, M20CRW2, M753K, M753W, M753W2, NL753K, NL753W, NL753W2, M773LW2, M773LW3, NL773LW3, M843JK, M843NK, M843NW2, M843NW3, NL843JK, NL843NK, NL843NW2, NL843NW3, M844K, M844LK, M844K2, M844LK2, M844LW2, M844W2, NL844K, NL844LK, NL844K2, NL844LK2, NL844LW2, NL844W2, M854-20N	NL-25-12057, Jabsco 30410-9001	JPR - NL10IP	€ 325	

# JMP impeller pumps

Engine Brand	Engine model	Genuine pump part no.	JMP pump no.	2022 Price
Northern Lights	M864K, M864W, M864W3, M964, M984K, M984W	NL-25-15405	JPR - NL10IP2	€ 336
Northern Lights	M30CW, M38CR2, M944T, M944W, NL944D2, NL944T	NL-25-11202	JPR - NL20IP	€ 427
Northern Lights		NL-25-11030	JPR - CP25UH	€ 179
Northern Lights	M1064A, M1064D, M1064H, M1064T, MP40C2, MP55C2, MP65C2, NL1064	NL-25-19522, NL-25-19501	JPR - JD25UH	€ 385
<b>JPR-NL08IH</b>	<b>JPR-NL10IP</b>	<b>JPR-NL10IP02</b>	<b>JPR-NL20IP</b>	<b>JPR-JD25UH</b>
ONAN (Cummins based)	MDKBH, MDKAU, MDKBJ, MDKBQ, QD 4/5/6/7.5/8 kW Generator	132-0395, 132-0430, G8002	JPR - ON7002	€ 204
ONAN (Cummins based)	MDKBK/L/M/N, MDKDK/M/N, QD 7/9, 9.5/11.5, 11/13.5 kW Generator	132-0459, G702	JPR - ON7102	€ 278
ONAN (Cummins based)	MDKDP, MDKDR, MDKDV, MDKBP, MDKBR, QD 13.5/17/17.5/19/21.5 kW Generator	A029U129, 132-0413, 132-0356, 132-0347, 132-0343, G1010	JPR - ON7310	€ 328
ONAN (Cummins based)	MDKDS, MDKDT, MDKDU, MDKBT, MDKBU, QD 22.5/27/29 kW Generator	A032Y747, 132-0464, G1012	JPR - ON7312	€ 352
<b>JPR-ON7002</b>	<b>JPR-ON7102</b>	<b>JPR-ON7310</b>	<b>JPR-ON7312</b>	
OSCO Motors	Crank driven pump	Johnson 10-24930-01 / F6B-9, P105	JPR - CP25UH	€ 179
PCM	Pleasure Craft Marine, crank driven pump	Johnson 10-24930-01 / F6B-9, P105	JPR - CP25UH	€ 179
PCM	Pleasure Craft Marine 4.2	P1014	JPR - HSP7314	€ 463
Perkins	Perama M20	14501730, Jabsco 29350-1001	JPR - PK10IH	€ 279
Perkins	Perama M25, M30, M35, M35HD 20 (100 series: 103-06, 103-09, 103-10)	145016941	JPR - VP0010DB	€ 284
Perkins	M92, M115Ti, M130C, M135, M185C, M215C, M225Ti, 370Ti, 1004, 1006	34449 (old part no. 33004)	JPR - CT3054	€ 603
<b>JPR-CP25UH</b>	<b>JPR-HSP7314</b>	<b>JPR-PK10IH</b>	<b>JPR-VP0010DB</b>	<b>JPR-CT3054</b>
Scania	D8, D9, DN9, DS9, DI11, DI12, DI13 and DI16 series	1785018, 1785244 old part no.1101070, 1101073, 1119309, Johnson 10-24308-02	JPR - SC50IF	€ 905
Scania	D13 Genset		JPR - SC50IF2	€ 1,044
Scania	D9, DI12, DI13, DI16 SERIES KEEL COOLING APPLICATION	1934597	JPR - SC5000B	Parts available
Vetus	M2.05 / M2.06 / M2D5 / M3.09 / M3.28 / M4.15 / M4.17	STM6109, Jabsco 29460-10-1081, Johnson 10-24734-01	JPR - VT08IH	€ 150
Vetus	VH4.65, VH4.80	STM4522	JPR - VT10LH	€ 188
Vetus	C4, CT4, C6, CT6	CT30195	JPR - C1025	€ 397
<b>JPR-SC50IF / JPR-SC50IF2</b>	<b>Parts for pump 1934597</b>	<b>JPR-VT08IH</b>	<b>JPR-VT10LH</b>	<b>JPR-C1025</b>
VIKOMA International		Jabsco 52200-0011	JPR - VK2000	€ 716
VIKOMA International		Jabsco 52270-0011	JPR - VK3000	€ 846
<b>JPR-VK2000 / JPR-VK3000</b>				

# JMP impeller pumps



**JPR-CP25UH**

**JPR-VP2799G**

**JPR-VP2800G**

**JPR-VP4596G**

**JPR-VP4599G**

Engine Brand	Engine model	Genuine pump part no.	JMP pump no.	2022 Price
Volvo Penta	V-6, V-8, 430A, 430B, 431A, 431B, BB231A, 500A, 500B, 501A, 501B, 570A, 571A, 572A, 740A, 740B, AQ200C, AQ200D, AQ200F, AQ211A, AQ225D, AQ225E, AQ225F, BB225A, BB225AV, BB225B, BB225C, AQ230B, AQ231A, AQ231B, BB231B, AQ255A, AQ255B, BB255AV, BB260A, BB260AV, BB260B, BB261A, AQ271A, AQ271B, AQ271C, AQ271D, AQ290A, AQ311A	855722, 856957, 857451	JPR - CP25UH	€ 179
Volvo Penta	4.3/5.0GL, 4.3/5.0/5.7GX, 5.7Gi, V6-200/225, V8-225/270/300/320	21212799	JPR - VP2799G	€ 291
Volvo Penta	8.1Gi, 8.1PS	21212800	JPR - VP2800G	€ 262
Volvo Penta	4.3/5.0/5.7GL, 4.3/5.0/5.7GS, 4.3/5.0Gi	21214596	JPR - VP4596G	€ 284
Volvo Penta	3.0GS, 4.3/5.0GL, 4.3/5.0Gi, 4.3/5.0GX, 5.7GS, 5.7Gi	21214599	JPR - VP4599G	€ 284
Volvo Penta	8.1Gi, DPX375/420	21214601	JPR - VP4601G	€ 289
Volvo Penta	4.3/5.0/5.7GL, 4.3/5.0/5.7GS, 4.3/5.0Gi	21255090	JPR - VP5090G	€ 289



**JPR-VP4610G**

**JPR-VP5090G**

**JPR-VP0010DA**

**JPR-VP0010DB**

Volvo Penta	D1-13A, D1-13B, D1-13F, D1-20A, D1-20B, D1-20F, MD2010A, MD2010B, MD2010C, MD2010D, MD2021A, MD2021B, MD2021C, MD2021D	3593654, Johnson 10-24751-01	JPR - VP0010DA	€ 291
Volvo Penta	D1-30A, D1-30B, D1-30F, D2-40A, D2-40B, D2-40F, MD2030A, MD2030B, MD2030C, MD2030D, MD2040A, MD2040B, MD2040C, MD2040D	3593655, Johnson 10-24752-01	JPR - VP0010DB	€ 284
Volvo Penta	D2-55A, D2-55B, D2-55C, D2-55D, D2-55E, D2-55F, D2-75A, D2-75B, D2-75C, D2-75F	3583089, Johnson 10-13283	JPR - VP0020D	€ 310
Volvo Penta	D3-1101-A, D3-1101-B, D3-1101-C, D3-130A-A, D3-130A-B, D3-1301-A, D3-1301-B, D3-130A-C, D3-1301-C, D3-160A-A, D3-160A-B, D3-1601-B, D3-160A-C, D3-1601-A, D3-1601-C, D3-190A-B, D3-190A-C, D3-1901-B, D3-1901-C	21141637 old no. 3884694	JPR - VP0030DA	€ 317
Volvo Penta	D3-1101-D, D3-1101-E, D3-1101-F, D3-1401-E, D3-1401-F, D3-140A-D, D3-140A-E, D3-140A-F, D3-1501-D, D3-1501-E, D3-1501-F, D3-1701-D, D3-1701-E, D3-1701-F, D3-170A-D, D3-170A-E, D3-170A-F, D3-2001-D, D3-2001-E, D3-2001-F, D3-200A-D, D3-200A-E, D3-200A-F, D3-2201-D, D3-2201-E, D3-2201-F, D3-220A-D, D3-220A-E, D3-220A-F	21379102	JPR - VP0030DB	€ 334



**JPR-VP0020D**

**JPR-VP0030DA**

**JPR-VP0030DB**

**JPR-VP0040DA**

**JPR-VP0040DB**



**JPR-VP0050D**

**JPR-VP0060DB**

**JPR-VP0090D  
& JPR-VP0110DA**

**JPR-VP0110DB**

**JPR-VP0130D**

**JPR-VP0160D**

Volvo Penta	D4-1801-B, D4-1801-C, D4-1801-D, D4-1801-E, D4-210A-A, D4-225A-B, D4-2101-A, D4-2101-B, D4-2251-B, D4-225A-C, D4-225A-D, D4-2251-C, D4-2251-D, D4-260A-A, D4-260A-B, D4-260A-C, D4-260A-D, D4-260D-B, D4-260D-C, D4-260D-D, D4-2601-A, D4-2601-B, D4-2601-C, D4-2601-D, D4-300A-A, D4-300A-C, D4-300A-D, D4-300D-A, D4-300D-C, D4-3001-A, D4-3001-C, D4-3001-D, D4-225A-E, D4-2251-E, D4-260A-E, D4-260D-E, D4-2601-E, D4-300A-E, D4-300D-E, D4-300D-D, D4-3001-E	3584062, Jabsco 50384-8000	JPR - VP0040DA	€ 477
Volvo Penta	D4-225A-E, D4-260A-E, D4-260D-E, D4-300A-E, D4-300D-E	21419374	JPR - VP0040DB	€ 465
Volvo Penta	D5A-T, D5A-TA, D5A-BTA, D7A-T, D7A-TA, D7A-BTA, D7C-TA, D7C-BTA	3838288, Johnson 10-24580	JPR - VP0050D	€ 394
Volvo Penta	D6-300A-F, D6-300D-F (MC), D6-3001-F, D6-330A-F, D6-330D-F, D6-3301-F, D6-370A-F, D6-370D-F, D6-3701-F, D6-400A-F, D6-435D-F, D6-4351-SC-F, D6-4351-TC-F, D6-4351-WJ-F	21380890 (old no. 3589907), Jabsco 50394-8300	JPR - VP0060DA	€ 456

# JMP impeller pumps

Engine Brand	Engine model	Genuine pump part no.	JMP pump no.	2022 Price
Volvo Penta	D6-300A-F, D6-300D-F (MC), D6-300I-F, D6-330A-F, D6-330D-F, D6-330I-F, D6-370A-F, D6-370D-F, D6-370I-F, D6-400A-F, D6-435D-F, D6-435I-SC-F, D6-435I-TC-F, D6-435I-WJ-F	21419376	JPR - VP0060DB	€ 570
Volvo Penta	D9A2A, D9-425, D9A2A, D9-500(R4), D9A2A, D9-575, D9A2B, D9-425, D9A2B, D9-500(R5), D9A2B, D9A-MH, D9A2B, D9A-575, D9A2B MH, D9A2C, D9A2D, D9A2E, D9A2F, D9A2G, D9A2H, D9A2J, D9A2K, D9A2A D9A-MG, D9A2A MG, D11A-A, D11A-B, D11A-C, D11A-D, D11A-C (IPS), D11A-D (IPS), D11A-E, D11A-E (IPS)	21380886 (old no. 3819485)	JPR - VP0090D	€ 974
Volvo Penta	D11B1-A MP, D11B2-A MP (IPS), D11A-A, D11A-B, D11A-C, D11A-D, D11A-C (IPS), D11A-D (IPS), D11A-E, D11A-E (IPS)	21219723	JPR - VP0110DA	€ 1,000
Volvo Penta	D11B1-A MP, D11B2-A MP (IPS)	22063494	JPR - VP0110DB	€ 963
Volvo Penta	D12D-A MH, D12D-B MH, D12D-C MH, D12C-A MP, D12D-A MP, D12D-B MP, D12D-C MP, D12D-D MP, D12D-E MP, D12D-F MP, D12D-G MP, D12D-H MP, D12D-C MH, D12D-E MH, D12D-G MH	3838207, 865295, Jabsco 29830-0001	JPR - VP0120D	€ 1.300
Volvo Penta	D13B-E/N MH, D13C1/2/3/4-A MP, D13B-A/B/C/D/G/H/J/K/L/M MP	3886848	JPR - VP0130D	€ 1,524
Volvo Penta	D16C-A MH, D16C-B MH, D16C-C MH	3589104	JPR - VP0160D	€ 1,069
Volvo Penta	KAD42P-A, KAMD42P-A, KAD32P-A, TAMD42WJ-A, KAD43P-A, KAMD42, KAMD43P, KAMD43P-A, KAMD43P-B, KAMD44, KAD44P-A, KAD44P-B, KAD44P-C, KAMD44P-A, KAMD44P-C, KAD300-A, KAMD300-A, AD31L-A, AD31P-A, AD41L-A, AD41P-A, D41L-A, TAMD31L-A, TAMD31M-A, TAMD31P-A, TAMD31S-A, TAMD41H-A, TAMD41H-B, TAMD41P-A, TAMD41L-A, TAMD41M-A, TMD31L-A, TMD41L-A, TMD41A, TMD41B, D41A, D41B, TAMD41A, TAMD41B, AQAD41A, AD41A, AD41B, 290A, DP-A, DP-B, DP-A1, DP-B1, SP-A, SP-A1, MD31A, TMD31B, TAMD31B, AD31B, TMD41B, D41B, TAMD41B, AD41B, KAD42A, KAMD42A, AD31D-A, AD31XD, TAMD31D, TMD31D, AD41D, D41D, TAMD41D, TMD41D, KAD42B, KAMD42B, TAMD42B, AD43, D41B, KAD43, KAD44, KAMD42A/B, TMD31, TMD41, TAMD31, TAMD41B, TAMD42B/WJ-A,	3583115 (old no. 3581558, 860629), Johnson 10-24524	JPR - V1000	€ 365
				
	<b>JPR-V1000</b>	<b>JPR-V2000</b>	<b>JPR-V3000</b>	<b>JPR-V5000</b>
Volvo Penta	TAMD61, TAMD71, MD100, MD100A, TAMD120A, TAMD102D, MD120, MD120A, TMD 100, TMD100A, TMD120, TMD120A, TMD121C, TMD122A, TAMD120, TAMD120A, TAMD121C, TAMD122A, TAMD122P	3829311 (old no. 846354), 822787, Johnson 10-21915-01	JPR - V2000	€ 756
Volvo Penta	TAMD120A, TAMD122A, TAMD120B, TAMD122C, TAMD122D(3583112), TAMD122P (3829313)	3829312, 3829313, Jabsco 10950-0041	JPR - V3000	€ 939
Volvo Penta	TAMD162, TAMD163, TAMD165	3583115, 3837935, Johnson 10-13166	JPR - V5000	€ 1,137
Volvo Penta	D25A-MT, D25A-MS, D30A-MT, D30A-MS	3835188	JPR - MD65LF2	€ 1,308
				
	<b>JPR-MD65LF</b>	<b>JPR-WB08IP</b>	<b>JPR-WB10IP</b>	<b>JPR-WB10IP</b>
Westerbeke	4.0BCD, 4.4BCD, 4.4WMD, 6.0BCD, 7.7WMD, 8.0WMD, 11.0WMD	WB37431, WB48080, Johnson 10-36006	JPR - WB08IP	€ 339
Westerbeke	4.2 BCG (Low-Profile) (50Hz), 5.8 BCGD Low-Profile – 50 Hz, 7.0 BCGD Low-Profile, 3.75/6.0/8.0 BCGTC – 50 Hz, 7.2/9.6 BCGTC, 6.4/8.0/10.0/12.0 BEG – 50 Hz, 8.0 BEG – 60 Hz, 12.5/15.0 BEG. 4.2/5.0/5.2 MCG low-CO – 50 Hz, 6.5 MCG low-CO, 4.2/5.4 SBGC low-CO – 50 Hz, 5.0/6.5 SBGC low-CO, 6.4/10.0/11.6 SBEG low-CO – 50 Hz, 10.0 SBEG – 60 Hz low-CO, 12.5/14 SBEG low-CO	55624, 055624 (replaces old p/n 42026 / 042026, 46120 / 046120)	JPR - WB10IP	€ 278
Westerbeke	17.0/23 EDE, 13.5/17.0 EDE	42175, 042175, G908/G903	JPR - WB7108	€ 290
				
	<b>JPR-YM07IP</b>	<b>JPR-YM08IH</b>	<b>JPR-YM04JHA</b>	<b>JPR-YM04JHB</b>
Yanmar	2GM, 2GM20F, 3GM, 3GM30F, 2YM, 3YM. Mounting bracket included	128397-42500 128377-42500, Johnson 10-24509-01	JPR - YM08IH	€ 177
Yanmar	2GML, 2GM20VE/20B/20C, 3GMD, 3GML, 3GM30VE/30B/30C	128270-42002, Old, 128270-42000/42001	JPR - YM07IP	€ 204
Yanmar	4JH3-THE, 4JH3-DTE, 4JH3E, 4JH3CE, 4JH3CE1, 4JH3-TE, 4JH3-TCE, 3JH3E, 3JH3E(EPA), 3JH3CE, 4JH3-TE-YEU, 4JH3-DTE(YEU), 3JH3E-YEU-E, 4JH4-TE, 4JH4-THE, 4JH4-HTE1	129670-42513, Johnson 10-13328-04	JPR - YM04JHA	€ 397
Yanmar	4JH5E, 3JH4E, 4JH4E, 4JH4AE, 3JH5E, 4JH45, 4JH57, 4JH80, 4JH110	129271-42502, Johnson 10-13328-01	JPR - YM04JHB	€ 345

# JMP impeller pumps

Engine Brand	Engine model	Genuine pump part no.	JMP pump no.	2022 Price
Yanmar	6LP(A)-DTE(P), 6LP(A)-STE(P), 6LPA-STP2	119773-42502, Johnson 10-24493-02	JPR - YM06LPA	€ 634
Yanmar	6LP(A)-DTZE(P), 6LP(A)-STZE(P), 6LPA-STZP2/3	119773-42650, 119773-42652, Johnson 10-24493-01	JPR - YM06LPB	€ 431
Yanmar	6LY2-ST, 6LY2-STVY, 6LY2-WST, 6LY2-WDT, 6LY2-WDTZY, 6LY2M-WDT, 6LY2M-WST, 6LYA-STP, 6LYA-STE, 6LYA-UTE, 6LY2-STE, 6LY2A-STP, 6LY2A-UTP	119574-42502, Johnson 10-13170-01	JPR - YM06LY2	€ 800
Yanmar	6LY3-ETP, 6LY3-STP, 6LY3-UTP, 6LY3-STC, 6LY3-UTC, 6LY3-ETP 24, 6LY3-STP 24, 6LY3-UTP 24, 6LY3-STC	119578-42501, Johnson 10-13286-01	JPR - YM06LY3	€ 655
Yanmar	6SY-STP720, 8SY-STP900	165000-36440	JPR - SC50IF	€ 905



**JPR-YM06LPA**



**JPR-YM06LPB**



**JPR-YM06LY2**



**JPR-YM06LY3**



**JPR-SC50IF**

## Multi-purpose pulley driven impeller pumps with pedestal and mechanical seal



**JPR-10IP**



**JPR-15IP**



**JPR-20IP**



**JPR-25UP**



**JPR-32LP**



**JPR-32UF**



**JPR-40LP**



**JPR-40UF**

## Multipurpose (Pedestal) Impeller Pumps

connection	connection type	shaft diameter	impeller	Remarks	JMP part no.	2022 Price
3/8"	BSP (internal)	Ø 12 mm.	7000K	replaces Johnson 10-24569-01 / F35B-8	JPR - 10IP	€ 170
1/2"	BSP (internal)	Ø 12 mm.	7050K	replaces Johnson 10-24570-01 / F4B-8	JPR - 15IP	€ 173
3/4"	BSP (internal)	Ø 17 mm.	7100K	replaces Johnson 10-24571-01 / F5B-9	JPR - 20IP	€ 223
1"	BSP (internal)	Ø 17 mm.	7400K	106 ltr./min. at 1,800 rpm.	JPR - 25UP	€ 217
1.25"	BSP (internal)	Ø 18 mm.	7502K / 7524K	158 ltr./min. at 1,800 rpm.	JPR - 32LP	€ 298
1.25"	Flanged with elbow kit	Ø 18 mm.	7502K / 7524K	158 ltr./min. at 1,800 rpm.	JPR - 32UF*	€ 334
1.5"	BSP (internal)	Ø 22 mm.	8001K	268 ltr./min. at 1,800 rpm.	JPR - 40LP	€ 452
1.5"	Flanged with elbow kit	Ø 22 mm.	8001K	268 ltr./min. at 1,800 rpm.	JPR - 40UF*	€ 459
1.5"	Flanged	Ø 25 mm.	8101K	268 ltr./min. at 1,800 rpm.	JPR - VK2000	€ 716
2"	BSP (internal)	Ø 22 mm.	8200K	394 ltr./min. at 1,800 rpm.	JPR - 50LP	€ 597
2"	BSP (internal)	Ø 22 mm.	8400K	448 ltr./min. at 1,800 rpm.	JPR - 50LPL	€ 653
2"	Flanged	Ø 22 mm.	8200K	394 ltr./min. at 1,800 rpm.	JPR - 50UF*	€ 763
2"	BSP (internal)	Ø 25 mm.	8301K	394 ltr./min. at 1,800 rpm.	JPR - VK3000	€ 846
2.5"	Flanged	Ø 30 mm.	9100K	591 ltr./min. at 1,800 rpm.	JPR - 65LF*	€ 1,116

\* Adaptor kits with flanges and hose connections are available upon request



**JPR-VK2000**



**JPR-50LP**



**JPR-50UF**



**JPR-65LF**

**Electro-magnetic clutch pump with pedestal and mechanical seal**

connection	type	impeller	flow @ 1,800 rpm.	Voltage (DC)	JMP part no.	2022 Price
1"	BSP (internal)	7400K	106 ltr./min.	12 / 24 VDC	JPR - M25IP1B12 / JPR - M25IP1B24	€ 501
1"	BSP (internal)	7400K	106 ltr./min.	12 / 24 VDC	JPR - M25IP2A12 / JPR - M25IP2A24	€ 523
1.5"	hose	8001K	268 ltr./min.	12 / 24 VDC	JPR - M40LH1B12 / JPR - M40LH1B24	€ 811
1.5"	hose	8001K	268 ltr./min.	24 VDC	JPR - M40LH2B24	€ 919
2"	BSP (internal)	8400K	448 ltr./min.	12 / 24 VDC	JPR - M50LPL1B12 / JPR - M50LPL1B24	€ 1,090
2"	BSP (internal)	8400K	448 ltr./min.	24 VDC	JPR - M50LPL2B24	€ 1,172
2.5"	Flange	9100K	591 ltr./min.	24 VDC	JPR-M65LF1B24H / JPR-M65LF1B24P	€ 1,518
2.5"	Flange	9100K	591 ltr./min.	24 VDC	JPR-M65LF1C24H / JPR-M65LF1C24P	€ 1,518
connection	remark		Ref. Johnson part. no.		JMP part no.	
1.5" NPT	NPT (internal)	8100K	Supplied without pulley	10-13022 series and F8B-5001	JPR - M40IP	€ 510
2" NPT	NPT (internal)	8301K	Supplied without pulley	10-13027 series and F9B-5600	JPR - M50IP	€ 644



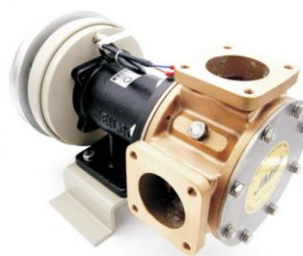
**JPR-M25IP**



**JPR-M40LH**



**JPR-M50LPL**



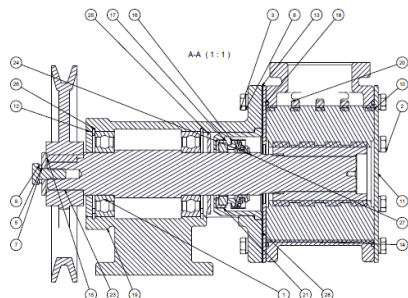
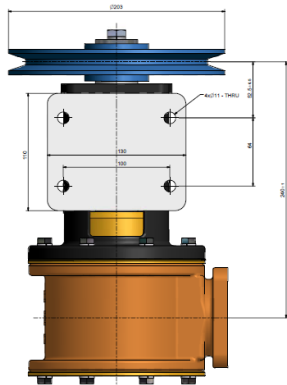
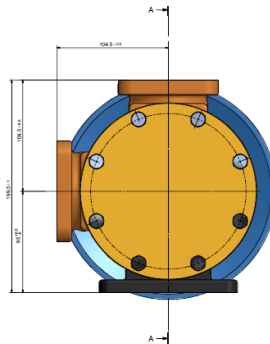
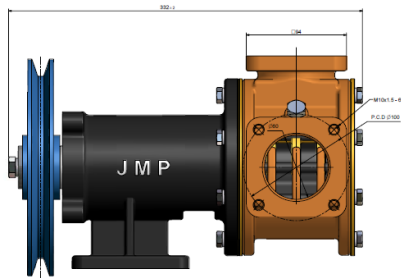
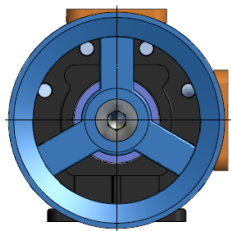
**JPR-M65LF**



**JPR-M40IP & JPR-M50IP**

**JMP** impeller pumps offer high quality materials, long lasting impellers and are assembled with top quality mechanical seals and bearings.

Complete **JMP** repair kits and replacement parts are available, also for OE pumps.



All mentioned prices are excl. VAT, incl. packing, FOT Putten - the Netherlands valid from Sept. 1<sup>st</sup> 2022 – Dec. 31<sup>st</sup> 2022



Keizerswoert 30 - 3881 LE - PUTTEN - NL  
Tel.: +31(0)341-353712 - Fax: +31(0)341-360046  
[www.dintra.com](http://www.dintra.com) - [info@dintra.com](mailto:info@dintra.com)